

CERTIFICATE OF LOCATION OF GOVERNMENT CORNER

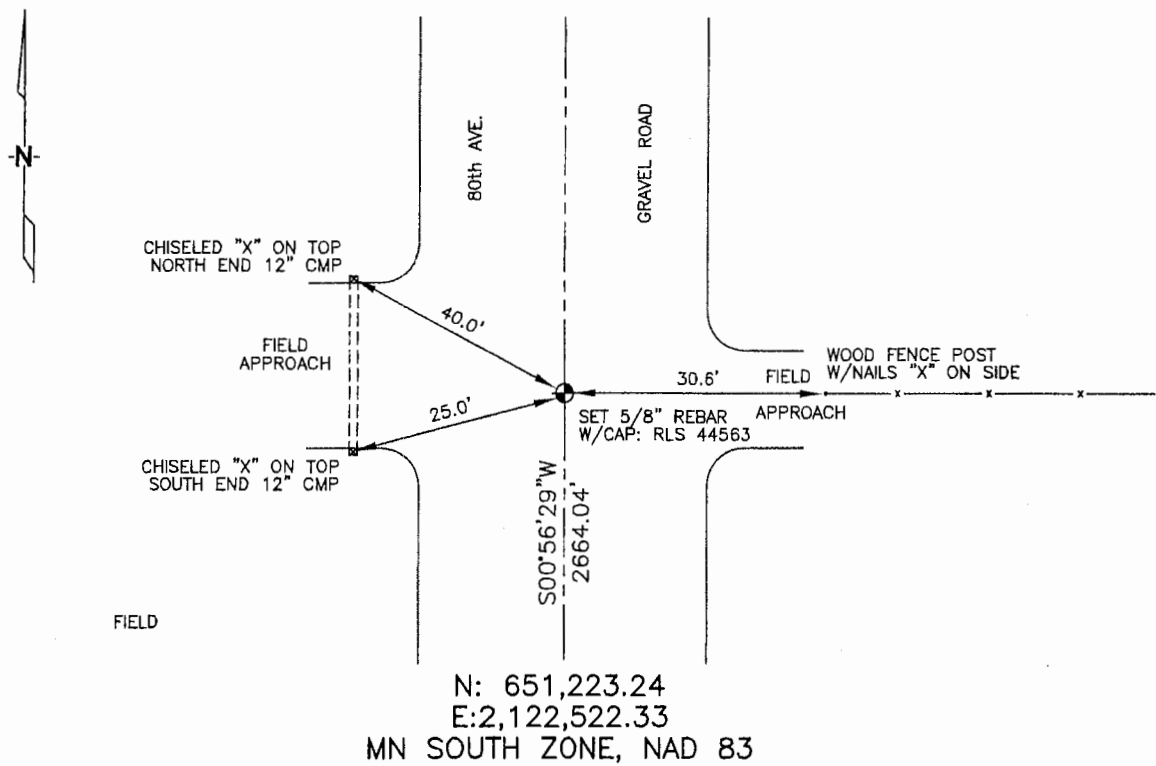
EAST 1/4 Corner of Section 29, Township 105, Range 42, 5TH P.M.

STATE OF MINNESOTA, County of MURRAY

At the corner location shown on the sketch :

- On _____ found _____
- left monument as found, lowered monument, removed monument (explain)
- On 3/9/2006 set 5/8" REBAR W/ CAP: RLS 44563,
OPPOSITE FENCE LINE RUNNING EAST.

Sketch of reference ties



Statement of evidence relative to this corner location is on back page

I hereby certify that this document and the data contained herein was prepared by me or under my direct supervision.

Thomas J. Zor _____
Signature Date

- Registration No. _____
- Land Surveyor, Professional Engineer
- County Surveyor, County Engineer

OFFICE OF THE COUNTY RECORDER

County of _____

SEP 28 2006

I hereby certify that this document was filed in the Co. Recorders office at _____ .M. on the _____ day of _____ A.D. , 20

County Recorder James V. Johnson
By _____, Deputy

DOCUMENT NO. _____

STATEMENT OF EVIDENCE:

EAST 1/4 CORNER, SECTION 29, T. 105 N., R. 42 W.,
MURRAY COUNTY, MINNESOTA

- 1861 D.W. Wellman & S.S. Smoot, US. Deputy Surveyors, monumented corner, as per instructions.
- ? Date Murray Co. Highway Dept., found a concrete monument, 5" below grade.
Ties: NE-38.7' to nail & cap in gate post;
E-33.3' to nail & cap in corner of post.
- 3/9/2006 Ulteig Engineers, Inc., Survey Crew, Brian Payne Party Chief, found nothing. Set a 5/8" rebar with cap: RLS 44563, opposite fence line running east.
Ties: NE-40.0' to chiseled "X" on top, north end, 3rd ring, 12" CMP;
SW-25.0' to chiseled "X" on top, south end, 2nd ring, 12" CMP;
E-30.6'; to nailed "X" on wood, fence post, in easterly fence line;
S-2664.04' to SE corner, Section 29.